



16020 Linden Ave North
Shoreline, WA 98133
www.usbiotek.com

MYCOTOXIN PANEL REPORT FORM

01/29/2024

PATIENT INFORMATION

Patient: Sample Report
Patient Date of Birth: 01/01/1960
Patient Sex:
MRN/Patient ID: NA
Patient Email: NA

ORDER INFORMATION

Accession No:
External Order No:
Reported On: 01/29/2024
Physician:
Practice:
Address: 16020 Linden Ave N, Shoreline, WA 98133

SAMPLE INFORMATION

Date of Receipt: 01/24/2024
Time of Receipt: 14:44 CDT
Date of Collection: 01/3/2024
Time of Collection: 00:00 CDT
Specimen Type: Urine

LAB INFORMATION

Phone: 1-972-492-0419
Fax: 1-972-243-7759
Email: info@realtimelab.com
CLIA #: 45D1051736
CAP #: 7210193
Tax ID #: 0669342

Procedure Type: Semi-quantitative procedure by ELISA

List of Mycotoxins tested in the Panel

Ochratoxin A - Procedure by ELISA

Aflatoxin Group: (B1, B2, G1, G2) - Procedure by ELISA

Trichothecene Group (Macrocyclic): Roridin A, Roridin E, Roridin H, Roridin L-2, Verrucaridin A, Verrucaridin J, Satratoxin G, Satratoxin H, Isosatratoxin F - Procedure by ELISA

Glutotoxin Derivative - Procedure by ELISA

Zearalenone - Procedure by ELISA

Results:

Code	Test	Specimen	Value	Result	Not Present if less than	Equivocal if between	Present if greater or equal
E8501	Ochratoxin A	Urine	12.41800 ppb	Present	1.8 ppb	1.8-2 ppb	2 ppb
E8502	Aflatoxin Group: (B1, B2, G1, G2)	Urine	0.32100 ppb	Not Present	0.8 ppb	0.8-1 ppb	1 ppb
E8503	Trichothecene Group (Macrocyclic): Roridin A, Roridin E, Roridin H, Roridin L-2, Verrucaridin A, Verrucaridin J, Satratoxin G, Satratoxin H, Isosatratoxin F	Urine	0.15500 ppb	Present	0.07 ppb	0.07-0.09 ppb	0.09 ppb
E8510	Glutotoxin Derivative	Urine	2.26200 ppb	Present	0.5 ppb	0.5-1.0 ppb	1.0 ppb
E8512	Zearalenone	Urine	0.93000 ppb	Present	0.5 ppb	0.5-0.7 ppb	0.7 ppb

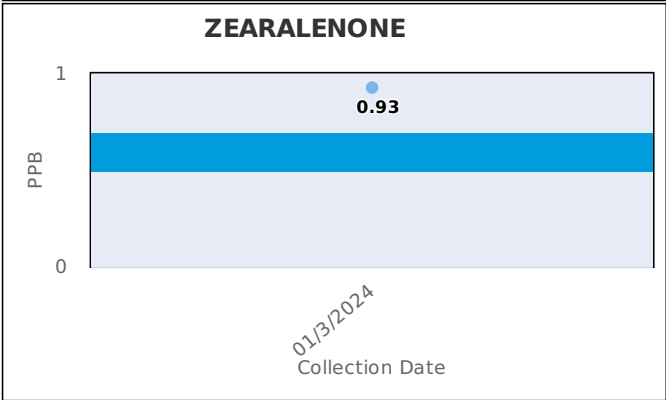
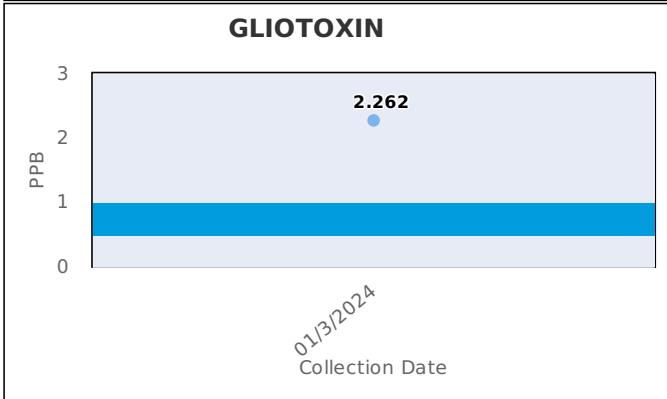
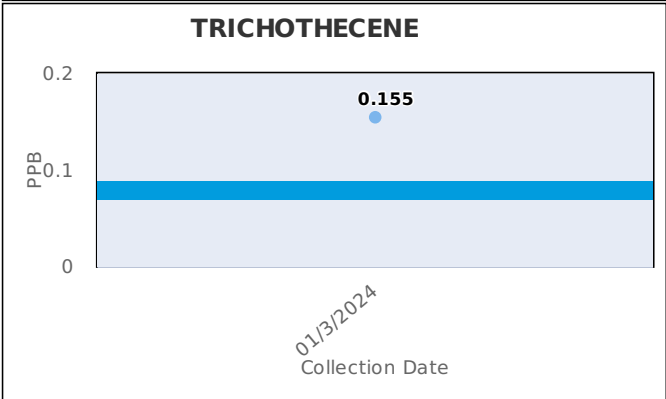
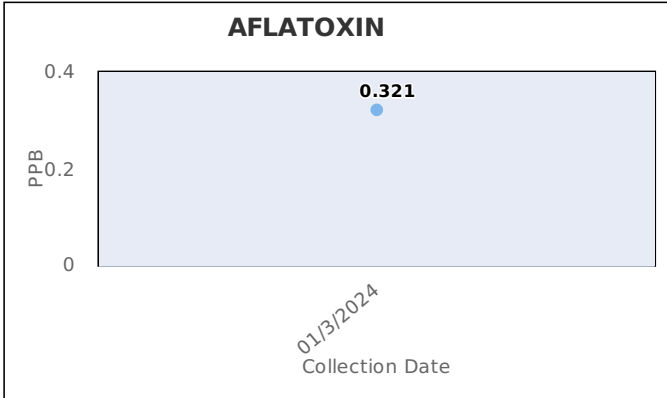
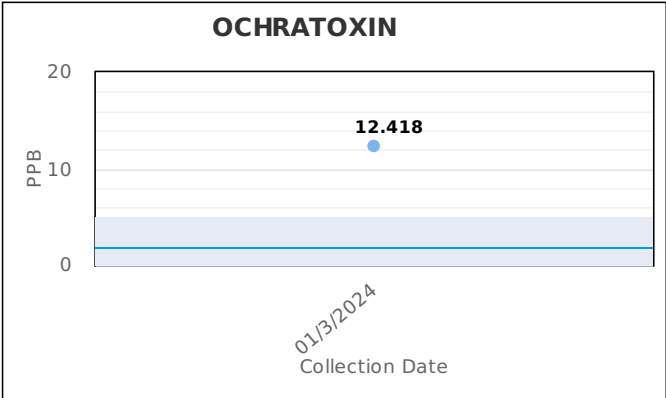
Report Comments:

Director or Designee Signature

Tests such as this should be used only in conjunction with other medically established diagnostic elements (e.g., symptoms, history, clinical impressions, results from other tests, etc). Physicians should use all the information available to them to diagnose and determine appropriate treatment for their patients.

Disclaimer: This test was developed and its performance characteristics determined by RealTime Lab. It has not been cleared or approved by the U.S. Food and Drug Administration. The FDA has determined that such clearance or approval is not necessary. This laboratory is certified under the Clinical Laboratory Improvement Amendments of 1988 (CLIA-88) as qualified to perform high complexity clinical laboratory testing.

Historical Results:



Results Summary:

Accession No	Collection Date	Ochra Result	Afla Result	Tricho Result	Gliotoxin Result	Zearalenone Result
380678	01/3/2024	12.41800 - Present	0.32100 - Not Present	0.15500 - Present	2.26200 - Present	0.93000 - Present

Mycotoxin		Cellular Activity of Mycotoxin	Symptoms/Other	Association with a "Disease State"
A FLA TOXIN FAMILY Organisms: <i>Aspergillus flavus</i>, <i>Aspergillus oryzae</i>, <i>Aspergillus fumigatus</i>, <i>Aspergillus parasiticus</i> Aflatoxins have been associated with liver cancer [2,3], cirrhosis [4,5], and other health issues				
1	Aflatoxin B1	Binds DNA and proteins [6,7]	Shortness of breath [8], weight loss [10], most potent and highly carcinogenic.	Primarily attacks the liver, other organs include kidneys and lungs [11]
2	Aflatoxin B2	Inhibits DNA and RNA replication [12]	Impaired fetal growth [13,14]	Affects the liver and kidneys [11]
3	Aflatoxin G1	Cytotoxic, induces apoptosis in cells, DNA damage [1]	A flavus is a leading cause of invasive aspergillus in immunocompromised patients [15]	Cancer, neonatal jaundice [2,3,16]
4	Aflatoxin G2	Cancer, neonatal jaundice [2,3,16]	Aflatoxicosis in humans and animals [15]	Malnutrition, lung cancer [2,3,16]
OCHRATOXIN A Organisms: <i>Aspergillus ochraceus</i>, <i>Aspergillus niger</i>, <i>Penicillium species</i>				
5	Ochratoxin A	Inhibits mitochondrial ATP, potent teratogen, and immune suppressor [17-19]	Fatigue, dermatitis, irritated bowel [20-22]	Kidney disease and cancer [23,24]
MA CROCYCLIC TRICHTHOCENES (Group D) Organism: <i>Stachybotrys chartarum</i>				
6	Satratoxin G	DNA, RNA, and protein synthesis inhibition [25]	Fatigue [26]	Bleeding disorders, nervous system disorders [27,28]
7	Satratoxin H	Inhibits protein synthesis [25]	Fatigue [26]	Breathing issues [29]
8	Isosatratoxin F	Immunosuppression [30]	Weakened immune system [30]	
9	Roridin A	Immunosuppression [30]	Weakened immune system [30]	
10	Roridin E	DNA, RNA, and protein synthesis disruption [25,32]	Weakened immune system [30]	Lung and nasal olfactory problems [31]
11	Roridin H	Inhibits protein synthesis [25]	Weakened immune system [30]	
12	Roridin L-2	Immunosuppression [30]	Weakened immune system [30]	
13	Verrucarin A	Immunosuppression [30]		
14	Verrucarin J	Immunosuppression [30]		
GLIOTOXIN DERIVATIVE Organisms: <i>Aspergillus fumigatus</i>, <i>Aspergillus terreus</i>, <i>Aspergillus niger</i>, <i>Aspergillus flavus</i>				
15	Gliotoxin	Attacks intracellular function in immune system [34]	Memory and breathing issues [35,36]	Immune dysfunction disorders [34]
ZEARALENONE Organisms: <i>Fusarium species</i>				
16	Zearalenone	Estrogen mimic [37,38]	Early puberty, low sperm counts, cancer [39-42]	Cancer [39,40]

REFERENCES:

- Zhang, Z., et al., *Cytochrome P450 2A13 is an efficient enzyme in metabolic activation of aflatoxin G1 in human bronchial epithelial cells.* Arch Toxicol, 2013. 87(9): p. 1697-707.
- Wang, S.H., S.H. Yeh, and P.J. Chen, *Androgen Enhances Aflatoxin-induced Genotoxicity and Inflammation to Liver Cancer in Male Hepatitis B Patients.* Cell Mol Gastroenterol Hepatol, 2023. 15(2): p. 507-508.
- Fan, J.H., et al., *Attributable causes of liver cancer mortality and incidence in china.* Asian Pac J Cancer Prev, 2013. 14(12): p. 7251-6.
- Seitz, H.K. and F. Stickel, *Risk factors and mechanisms of hepatocarcinogenesis with special emphasis on alcohol and oxidative stress.* Biol Chem, 2006. 387(4): p. 349-60.
- Chiu, Y.J., et al., *Aflatoxin B(1) exposure increases the risk of cirrhosis and hepatocellular carcinoma in chronic hepatitis B virus carriers.* Int J Cancer, 2017. 141(4): p. 711-720.
- Lin, Y.C., et al., *DNA polymerase zeta limits chromosomal damage and promotes cell survival following aflatoxin exposure.* Proc Natl Acad Sci U S A, 2016. 113(48): p. 13774-13779.
- Poirier, M.C., *Chemical-induced DNA damage and human cancer risk.* Discov Med, 2012. 14(77): p. 283-8.
- Le Pape, P., et al., *First case of Aspergillus caelatus airway colonization in a Chronic Obstructive Pulmonary Disease patient.* Int J Infect Dis, 2019. 81: p. 85-90.
- Hernandez-Martinez, R. and I. Navarro-Blasco, *Aflatoxin levels and exposure assessment of Spanish infant cereals.* Food Addit Contam Part B Surveill, 2010. 3(4): p. 275-88.
- Melaram, R., *Environmental Risk Factors Implicated in Liver Disease: A Mini-Review.* Front Public Health, 2021. 9: p. 683719.
- Pelkonen, O. and H. Raunio, *Metabolic activation of toxins: tissue-specific expression and metabolism in target organs.* Environ Health Perspect, 1997. 105 Suppl 4(Suppl 4): p. 767-74.
- Madrigal-Santillan, E., et al., *Antigenotoxic studies of different substances to reduce the DNA damage induced by aflatoxin B(1) and ochratoxin A.* Toxins (Basel), 2010. 2(4): p. 738-57.
- Tesfamariam, K., et al., *Chronic aflatoxin exposure during pregnancy is associated with lower fetal growth trajectories: a prospective cohort from the Butajira Nutrition, Mental Health, and Pregnancy (BUNMAP) Study in rural Ethiopia.* Am J Clin Nutr, 2022. 116(6): p. 1634-1641.
- Smith, L.E., et al., *Aflatoxin Exposure During Pregnancy, Maternal Anemia, and Adverse Birth Outcomes.* Am J Trop Med Hyg, 2017. 96(4): p. 770-776.
- Sugui, J.A., et al., *Aspergillus fumigatus and related species.* Cold Spring Harb Perspect Med, 2014. 5(2): p. a019786.
- Raafat, N., et al., *Assessment of serum aflatoxin B(1) levels in neonatal jaundice with glucose-6-phosphate dehydrogenase deficiency: a preliminary study.* Mycotoxin Res, 2021. 37(1): p. 109-116.
- Al-Anati, L. and E. Petzinger, *Immunotoxic activity of ochratoxin A.* J Vet Pharmacol Ther, 2006. 29(2): p. 79-90.
- Tao, Y., et al., *Ochratoxin A: Toxicity, oxidative stress and metabolism.* Food Chem Toxicol, 2018. 112: p. 320-331.
- Park, S., et al., *Ochratoxin A exerts neurotoxicity in human astrocytes through mitochondria-dependent apoptosis and intracellular calcium overload.* Toxicol Lett, 2019. 313: p. 42-49.
- Wu, T.Y., et al., *Prevalence of Aspergillus-Derived Mycotoxins (Ochratoxin, Aflatoxin, and Gliotoxin) and Their Distribution in the Urinalysis of ME/CFS Patients.* Int J Environ Res Public Health, 2022. 19(4).
- Akiyama, T., et al., *The human cathelicidin LL-37 host defense peptide upregulates tight junction-related proteins and increases human epidermal keratinocyte barrier function.* J Innate Immun, 2014. 6(6): p. 739-53.
- Gao, Y., et al., *The Compromised Intestinal Barrier Induced by Mycotoxins.* Toxins (Basel), 2020. 12(10).
- Clark, H.A. and S.M. Snedeker, *Ochratoxin a: its cancer risk and potential for exposure.* J Toxicol Environ Health B Crit Rev, 2006. 9(3): p. 265-96.
- Fuchs, R. and M. Peraica, *Ochratoxin A in human kidney diseases.* Food Addit Contam, 2005. 22 Suppl 1: p. 53-7.
- Yang, G.H., et al., *Apoptosis induction by the satratoxins and other trichothecene mycotoxins: relationship to ERK, p38 MAPK, and SAPK/JNK activation.* Toxicol Appl Pharmacol, 2000. 164(2): p. 149-60.
- Johanning, E., et al., *Health and immunology study following exposure to toxigenic fungi (Stachybotrys chartarum) in a water-damaged office environment.* Int Arch Occup Environ Health, 1996. 68(4): p. 207-18.
- Islam, Z., et al., *Purification and comparative neurotoxicity of the trichothecenes satratoxin G and roridin L2 from Stachybotrys chartarum.* J Toxicol Environ Health A, 2009. 72(20): p. 1242-51.
- Jarvis, B.B., et al., *Study of toxin production by isolates of Stachybotrys chartarum and Memnoniella echinata isolated during a study of pulmonary hemosiderosis in infants.* Appl Environ Microbiol, 1998. 64(10): p. 3620-5.
- Yike, I., T.G. Rand, and D.G. Dearborn, *Acute inflammatory responses to Stachybotrys chartarum in the lungs of infant rats: time course and possible mechanisms.* Toxicol Sci, 2005. 84(2): p. 408-17.
- Lee, M.G., et al., *Effects of satratoxins and other macrocyclic trichothecenes on IL-2 production and viability of EL-4 thymoma cells.* J Toxicol Environ Health A, 1999. 57(7): p. 459-74.
- Thrasher, J.D. and S. Crawley, *The biocontaminants and complexity of damp indoor spaces: more than what meets the eyes.* Toxicol Ind Health, 2009. 25(9-10): p. 583-615.
- Nagase, M., et al., *Apoptosis induction by T-2 toxin: activation of caspase-9, caspase-3, and DFF-40/CAD through cytosolic release of cytochrome c in HL-60 cells.* Biosci Biotechnol Biochem, 2001. 65(8): p. 1741-7.
- Wu, Q., et al., *Trichothecenes: immunomodulatory effects, mechanisms, and anti-cancer potential.* Arch Toxicol, 2017. 91(12): p. 3737-3785.
- Schlam, D., et al., *Gliotoxin Suppresses Macrophage Immune Function by Subverting Phosphatidylinositol 3,4,5-Trisphosphate Homeostasis.* mBio, 2016. 7(2): p. e02242.
- Xiao, W., et al., *Sputum signatures for invasive pulmonary aspergillosis in patients with underlying respiratory diseases (SPARED): study protocol for a prospective diagnostic trial.* BMC Infect Dis, 2018. 18(1): p. 271.
- Kapoor, T., et al., *Forskolin, an Adenylcyclase/cAMP/CREB Signaling Activator Restoring Myelin-Associated Oligodendrocyte Destruction in Experimental Ethidium Bromide Model of Multiple Sclerosis.* Cells, 2022. 11(18).
- Kowalska, K., D.E. Habrowska-Gorczyńska, and A.W. Piastowska-Ciesielska, *Zearalenone as an endocrine disruptor in humans.* Environ Toxicol Pharmacol, 2016. 48: p. 141-149.
- Yan, W.K., et al., *Zearalenone affects the growth of endometriosis via estrogen signaling and inflammatory pathways.* Ecotoxicol Environ Saf, 2022. 241: p. 113826.
- Lo, E.K.K., et al., *Low dose of zearalenone elevated colon cancer cell growth through G protein-coupled estrogenic receptor.* Sci Rep, 2021. 11(1): p. 7403.
- Kowalska, K., et al., *ERbeta and Nfkapab-Modulators of Zearalenone-Induced Oxidative Stress in Human Prostate Cancer Cells.* Toxins (Basel), 2020. 12(3).
- Lee, R., et al., *Zearalenone Induces Apoptosis and Autophagy in a Spermatogonia Cell Line.* Toxins (Basel), 2022. 14(2).
- Massart, F. and G. Saggese, *Oestrogenic mycotoxin exposures and precocious pubertal development.* Int J Androl, 2010. 33(2): p. 369-76.



16020 Linden Ave North
Shoreline, WA 98133
www.usbiotek.com

Fungal Count Dx Report Form 01/31/2024

COMPANY INFORMATION

Company:
Project:
Location:
Project Phone:
Project Email:

ORDER INFORMATION

Accession No:
Date of Service: 01/19/2024
Reported On: 01/31/2024
Contact:

SAMPLE INFORMATION

Date of Receipt: 01/23/2024
Time of Receipt: 11:41 CDT
Date of Collection: 01/19/2024
Time of Collection: 00:00 CDT
Sample Type: Filter

LAB INFORMATION

Phone: 1-972-492-0419
Fax: 1-972-243-7759
Email: info@realtimelab.com
CLIA #: 45D1051736
CAP #: 7210193
Tax ID #: 0669342

Procedure: FUNGAL COUNT

TYPE: Quantitative PCR (Polymerase Chain Reaction)

RESULTS:

Code	TEST	Results (Fungal Elements/ML)
EM001	Aspergillus flavus	21853.00
EM002	Aspergillus fumigatus	2263.00
EM003	Aspergillus niger	0.00
EM004	Aspergillus ochraceus	0.00
EM005	Aspergillus versicolor	0.00
EM006	Chaetomium globosum	0.00
EM008	Penicillium brevicompactum	423.00
EM010	Stachybotrys chartarum	0.00
EM013	Aspergillus terreus	0.00
EM014	Candida auris	0.00
EM015	Fusarium solani	0.00
EM016	Penicillium chrysogenum	0.00

REPORT COMMENTS:

Filter

Director or Designee Signature _____

RTL maintains liability limited to cost of analysis. Interpretation of the data contained in this report is the responsibility of the client. This report relates only to the samples reported above and may not be reproduced, except in full, without written approval by RTL. The above test report relates only to the items tested. RTL bears no responsibility for sample collection activities or analytical method limitations.

MOLD	MYCOTOXIN PRODUCED	POTENTIAL HEALTH ISSUES
<i>Aspergillus fumigatus</i>	Gliotoxin, Aflatoxin	<i>A. fumigatus</i> is frequently found in homes and buildings [1]. It is considered to be an opportunistic pathogen, meaning it rarely infects healthy individuals, but is the leading cause of invasive aspergillosis (IA) in immunocompromised individuals such as cancer, HIV or transplant patients [2].
<i>Aspergillus flavus</i>	Gliotoxin, Aflatoxin	<i>A. flavus</i> is the second leading cause of invasive aspergillosis in immunocompromised patients. Particularly common clinical syndromes associated with <i>A. flavus</i> include: chronic granulomatous sinusitis, keratitis, cutaneous aspergillosis, wound infections and osteomyelitis following trauma and inoculation [3, 4]. Can cause liver cancer in humans [5].
<i>Aspergillus terreus</i>	Gliotoxin, Citirin	Inhalation of fungal spores, which travel down along the respiratory tract, cause the typical respiratory infection [6].
<i>Aspergillus versicolor</i>	Sterigmatocystin	<i>A. versicolor</i> is one of the most frequently found molds in water-damaged buildings. <i>A. versicolor</i> is known to produce a mycotoxin called sterigmatocystin a potentially carcinogenic and hepatotoxic mycotoxin. It is primarily toxic to the liver and kidneys [7].
<i>Aspergillus ochraceus</i>	Ochratoxin	Ochratoxin has been demonstrated to be Nephrotoxic, Hepatotoxic, and Carcinogenic and is a potent teratogen and immune-suppressant [8]. It has also been associated with urinary tract infections and bladder cancer [9].
<i>Aspergillus niger</i>	Ochratoxin, Gliotoxin	<i>A. niger</i> produces gliotoxin, which has been identified in the sera of humans and mice with aspergillosis. Causes immunosuppression in patients [8].
<i>Stachybotrys chartarum</i>	Macrocytic Trichothecenes	<i>S. chartarum</i> , commonly known as black mold, is highly toxic to humans. Nausea, vomiting, diarrhea, burning erythema, ataxia, chills, fever, hypotension, hair loss and confusion are symptoms in individuals living or working inside <i>Stachybotrys</i> infested homes and buildings [10].
<i>Chaetomium globosum</i>	Chaetoglobosins	<i>C. globosum</i> is a common indoor fungal contaminant of water damaged homes or buildings. Like <i>Stachybotrys</i> , <i>C. globosum</i> spores are relatively large and due to their mode of release are not as easily airborne as are some other molds [11].
<i>Fusarium species</i>	Fumonisin; Zearalenone	<i>Fusarium</i> can cause superficial infections such as keratitis or onychomycosis in healthy individuals and disseminated infections in immunocompromised patients [12].
<i>Candida auris</i>	Unknown	<i>C. auris</i> can be found in healthcare facilities and can be spread through contact with infected patients and equipment"s. <i>C. auris</i> can cause blood stream infections, wound infections and ear infections [13].
<i>Penicillium brevicompactum</i>	Ochratoxin A	Producer of the toxin Ochratoxin A. Fungal particles depend on the relative humidity [14]. Can lead to chronic Rhinosinusitis if breathed in high concentrations [15].
<i>Penicillium chrysogenum</i>	Ochratoxin A	Producer of the toxin Ochratoxin A. Fungal particles depend on the relative humidity [14]. Can lead to chronic Rhinosinusitis if breathed in high concentrations [16]. High levels are correlated with the development of sick building syndrome [17].

REFERENCES:

- Vesper, S., et al., *Quantitative PCR analysis of molds in the dust from homes of asthmatic children in North Carolina*. J Environ Monit, 2007. 9(8): p. 826-30.
- Roohani, A.H., et al., *Comparing the profile of respiratory fungal pathogens amongst immunocompetent and immunocompromised hosts, their susceptibility pattern and correlation of various opportunistic respiratory fungal infections and their progression in relation to the CD4+T-cell counts*. Indian J Med Microbiol, 2018. 36(3): p. 408-415.
- Deshazo, R.D., *Syndromes of invasive fungal sinusitis*. Med Mycol, 2009. 47 Suppl 1: p. S309-14.
- Hedayati, M.T., et al., *Aspergillus flavus: human pathogen, allergen and mycotoxin producer*. Microbiology (Reading), 2007. 153(Pt 6): p. 1677-1692.
- Nixon, M.W., *Aflatoxin and liver cancer*. Lancet, 1990. 335(8698): p. 1165.
- Vahedi Shahandashti, R. and C. Lass-Flörl, *Antifungal resistance in Aspergillus terreus: A current scenario*. Fungal Genet Biol, 2019. 131: p. 103247.
- Reijula, K. and T. Tuomi, *Mycotoxins of aspergilli: exposure and health effects*. Front Biosci, 2003. 8: p. s232-5.
- Bui-Klimke, T.R. and F. Wu, *Ochratoxin A and human health risk: a review of the evidence*. Crit Rev Food Sci Nutr, 2015. 55(13): p. 1860-9.
- Sobel, J.D. and J.A. Vazquez, *Fungal infections of the urinary tract*. World J Urol, 1999. 17(6): p. 410-4.
- Kuhn, D.M. and M.A. Ghannoum, *Indoor mold, toxigenic fungi, and Stachybotrys chartarum: infectious disease perspective*. Clin Microbiol Rev, 2003. 16(1): p. 144-72.
- Straus, D.C., *The possible role of fungal contamination in sick building syndrome*. Front Biosci (Elite Ed), 2011. 3(2): p. 562-80.
- Cabrera-Aguas, M., P. Khoo, and S.L. Watson, *Infectious keratitis: A review*. Clin Exp Ophthalmol, 2022. 50(5): p. 543-562.
- Bradley, S.F., *What Is Known About Candida auris*. JAMA, 2019. 322(15): p. 1510-1511.
- Heutte, N., et al., *Assessment of multi-contaminant exposure in a cancer treatment center: a 2-year monitoring of molds, mycotoxins, endotoxins, and glucans in bioaerosols*. Environ Monit Assess, 2017. 189(1): p. 31.
- Murr, A.H., et al., *Some chronic rhinosinusitis patients have elevated populations of fungi in their sinuses*. Laryngoscope, 2012. 122(7): p. 1438-45.
- Bhavsar, S., et al., *Invasive rhinosinusitis due to Penicillium chrysogenum in an adolescent man with new-onset leukaemia: a diagnostic dilemma*. BMJ Case Rep, 2022. 15(12).
- Straus, D.C., *Molds, mycotoxins, and sick building syndrome*. Toxicol Ind Health, 2009. 25(9-10): p. 617-35.



16020 Linden Ave North
Shoreline, WA 98133
www.usbiotek.com

ENVIRONMENTAL MYCOTOXIN PANEL REPORT FORM

01/26/2024

COMPANY INFORMATION

Company:
Project:
Location:
Project Phone:
Project Email:

ORDER INFORMATION

Accession No:
Date of Service: 01/19/2024
Reported On: 01/26/2024
Contact:

SAMPLE INFORMATION

Date of Receipt: 01/23/2024
Time of Receipt: 11:41 CDT
Date of Collection: 01/19/2024
Time of Collection: 00:00 CDT
Sample Type: Filter

LAB INFORMATION

Phone: 1-972-492-0419
Fax: 1-972-243-7759
Email: info@realtimelab.com
CLIA #: 45D1051736
CAP #: 7210193
Tax ID #: 0669342

Procedure Type: Semi-quantitative procedure by ELISA

List of Mycotoxins tested in the Panel

Ochratoxin A

Aflatoxin Group: (B1, B2, G1, G2)

Trichothecene Group (Macrocytic): Roridin A, Roridin E, Roridin H, Roridin L-2, Verrucaridin A, Verrucaridin J, Satratoxin G, Satratoxin H, Isosatratoxin F

Gliotoxin Derivative

Zearalenone

Results:

Code	Test	Specimen	Value	Result	Not Present if less than	Equivocal if between	Present if greater or equal
D8501	Ochratoxin A	Filter	1.62000 ppb	Not Present	1.8 ppb	1.8-2 ppb	2 ppb
D8502	Aflatoxin Group: (B1, B2, G1, G2)	Filter	0.13700 ppb	Not Present	0.8 ppb	0.8-1 ppb	1 ppb
D8503	Trichothecene Group (Macrocytic): Roridin A, Roridin E, Roridin H, Roridin L-2, Verrucaridin A, Verrucaridin J, Satratoxin G, Satratoxin H, Isosatratoxin F	Filter	0.09900 ppb	Present	0.07 ppb	0.07-0.09 ppb	0.09 ppb
D8510	Gliotoxin Derivative	Filter	0.43700 ppb	Not Present	0.5 ppb	0.5-1.0 ppb	1.0 ppb
D8512	Zearalenone	Filter	0.10500 ppb	Not Present	0.5 ppb	0.5-0.7 ppb	0.7 ppb

REPORT COMMENTS:

Filter

Director or Designee Signature _____

Tests such as this should be used only in conjunction with other medically established diagnostic elements (e.g., symptoms, history, clinical impressions, results from other tests, etc). Physicians should use all the information available to them to diagnose and determine appropriate treatment for their patients.

Disclaimer: This test was developed and its performance characteristics determined by RealTime Lab. It has not been cleared or approved by the U.S. Food and Drug Administration. The FDA has determined that such clearance or approval is not necessary. This laboratory is certified under the Clinical Laboratory Improvement Amendments of 1988 (CLIA-88) as qualified to perform high complexity clinical laboratory testing.

Mycotoxin		Cellular Activity of Mycotoxin	Symptoms/Other	Association with a "Disease State"
A FLATOXIN FAMILY Organisms: <i>Aspergillus flavus</i>, <i>Aspergillus oryzae</i>, <i>Aspergillus fumigatus</i>, <i>Aspergillus parasiticus</i> Aflatoxins have been associated with liver cancer [2,3], cirrhosis [4,5], and other health issues				
1	Aflatoxin B1	Binds DNA and proteins [6,7]	Shortness of breath [8], weight loss [10], most potent and highly carcinogenic.	Primarily attacks the liver, other organs include kidneys and lungs [11]
2	Aflatoxin B2	Inhibits DNA and RNA replication [12]	Impaired fetal growth [13,14]	Affects the liver and kidneys [11]
3	Aflatoxin G1	Cytotoxic, induces apoptosis in cells, DNA damage [1]	A flavus is a leading cause of invasive aspergillus in immunocompromised patients [15]	Cancer, neonatal jaundice [2,3,16]
4	Aflatoxin G2	Cancer, neonatal jaundice [2,3,16]	Aflatoxicosis in humans and animals [15]	Malnutrition, lung cancer [2,3,16]
OCHRA TOXIN A Organisms: <i>Aspergillus ochraceus</i>, <i>Aspergillus niger</i>, <i>Penicillium species</i>				
5	Ochratoxin A	Inhibits mitochondrial ATP, potent teratogen, and immune suppressor [17-19]	Fatigue, dermatitis, irritated bowel [20-22]	Kidney disease and cancer [23,24]
MA CROCYCLIC TRICHOTHECENES (Group D) Organism: <i>Stachybotrys chartarum</i>				
6	Satratoxin G	DNA, RNA, and protein synthesis inhibition [25]	Fatigue [26]	Bleeding disorders, nervous system disorders [27,28]
7	Satratoxin H	Inhibits protein synthesis [25]	Fatigue [26]	Breathing issues [29]
8	Isosatratoxin F	Immunosuppression [30]	Weakened immune system [30]	
9	Roridin A	Immunosuppression [30]	Weakened immune system [30]	
10	Roridin E	DNA, RNA, and protein synthesis disruption [25,32]	Weakened immune system [30]	Lung and nasal olfactory problems [31]
11	Roridin H	Inhibits protein synthesis [25]	Weakened immune system [30]	
12	Roridin L-2	Immunosuppression [30]	Weakened immune system [30]	
13	Verrucarin A	Immunosuppression [30]		
14	Verrucarin J	Immunosuppression [30]		
GLIOTOXIN DERIVATIVE Organisms: <i>Aspergillus fumigatus</i>, <i>Aspergillus terreus</i>, <i>Aspergillus niger</i>, <i>Aspergillus flavus</i>				
15	Gliotoxin	Attacks intracellular function in immune system [34]	Memory and breathing issues [35,36]	Immune dysfunction disorders [34]
ZEARA LENONE Organisms: <i>Fusarium species</i>				
16	Zearalenone	Estrogen mimic [37,38]	Early puberty, low sperm counts, cancer [39-42]	Cancer [39,40]

REFERENCES:

- Zhang, Z., et al., *Cytochrome P450 2A13 is an efficient enzyme in metabolic activation of aflatoxin G1 in human bronchial epithelial cells*. Arch Toxicol, 2013. 87(9): p. 1697-707.
- Wang, S.H., S.H. Yeh, and P.J. Chen, *Androgen Enhances Aflatoxin-induced Genotoxicity and Inflammation to Liver Cancer in Male Hepatitis B Patients*. Cell Mol Gastroenterol Hepatol, 2023. 15(2): p. 507-508.
- Fan, J.H., et al., *Attributable causes of liver cancer mortality and incidence in china*. Asian Pac J Cancer Prev, 2013. 14(12): p. 7251-6.
- Seitz, H.K. and F. Stickel, *Risk factors and mechanisms of hepatocarcinogenesis with special emphasis on alcohol and oxidative stress*. Biol Chem, 2006. 387(4): p. 349-60.
- Chu, Y.J., et al., *Aflatoxin B(1) exposure increases the risk of cirrhosis and hepatocellular carcinoma in chronic hepatitis B virus carriers*. Int J Cancer, 2017. 141(4): p. 711-720.
- Lin, Y.C., et al., *DNA polymerase zeta limits chromosomal damage and promotes cell survival following aflatoxin exposure*. Proc Natl Acad Sci U S A, 2016. 113(48): p. 13774-13779.
- Poirier, M.C., *Chemical-induced DNA damage and human cancer risk*. Discov Med, 2012. 14(77): p. 283-8.
- Le Pape, P., et al., *First case of Aspergillus caelatus airway colonization in a Chronic Obstructive Pulmonary Disease patient*. Int J Infect Dis, 2019. 81: p. 85-90.
- Hernandez-Martinez, R. and I. Navarro-Blasco, *Aflatoxin levels and exposure assessment of Spanish infant cereals*. Food Addit Contam Part B Surveill, 2010. 3(4): p. 275-88.
- Melaram, R., *Environmental Risk Factors Implicated in Liver Disease: A Mini-Review*. Front Public Health, 2021. 9: p. 683719.
- Pelkonen, O. and H. Raunio, *Metabolic activation of toxins: tissue-specific expression and metabolism in target organs*. Environ Health Perspect, 1997. 105 Suppl 4(Suppl 4): p. 767-74.
- Madrigal-Santillan, E., et al., *Antigenotoxic studies of different substances to reduce the DNA damage induced by aflatoxin B(1) and ochratoxin A*. Toxins (Basel), 2010. 2(4): p. 738-57.
- Tesfamariam, K., et al., *Chronic aflatoxin exposure during pregnancy is associated with lower fetal growth trajectories: a prospective cohort from the Butajira Nutrition, Mental Health, and Pregnancy (BUNMAP) Study in rural Ethiopia*. Am J Clin Nutr, 2022. 116(6): p. 1634-1641.
- Smith, L.E., et al., *Aflatoxin Exposure During Pregnancy, Maternal Anemia, and Adverse Birth Outcomes*. Am J Trop Med Hyg, 2017. 96(4): p. 770-776.
- Sugui, J.A., et al., *Aspergillus fumigatus and related species*. Cold Spring Harb Perspect Med, 2014. 5(2): p. a019786.
- Raafat, N., et al., *Assessment of serum aflatoxin B(1) levels in neonatal jaundice with glucose-6-phosphate dehydrogenase deficiency: a preliminary study*. Mycotoxin Res, 2021. 37(1): p. 109-116.
- Al-Anati, L. and E. Petzinger, *Immunotoxic activity of ochratoxin A*. J Vet Pharmacol Ther, 2006. 29(2): p. 79-90.
- Tao, Y., et al., *Ochratoxin A: Toxicity, oxidative stress and metabolism*. Food Chem Toxicol, 2018. 112: p. 320-331.
- Park, S., et al., *Ochratoxin A exerts neurotoxicity in human astrocytes through mitochondria-dependent apoptosis and intracellular calcium overload*. Toxicol Lett, 2019. 313: p. 42-49.
- Wu, T.Y., et al., *Prevalence of Aspergillus-Derived Mycotoxins (Ochratoxin, Aflatoxin, and Gliotoxin) and Their Distribution in the Urinalysis of ME/CFS Patients*. Int J Environ Res Public Health, 2022. 19(4): p. 113826.
- Akiyama, T., et al., *The human cathelicidin LL-37 host defense peptide upregulates tight junction-related proteins and increases human epidermal keratinocyte barrier function*. J Innate Immun, 2014. 6(6): p. 739-53.
- Gao, Y., et al., *The Compromised Intestinal Barrier Induced by Mycotoxins*. Toxins (Basel), 2020. 12(10): p. 113826.
- Clark, H.A. and S.M. Snedeker, *Ochratoxin a: its cancer risk and potential for exposure*. J Toxicol Environ Health B Crit Rev, 2006. 9(3): p. 265-96.
- Fuchs, R. and M. Peraica, *Ochratoxin A in human kidney diseases*. Food Addit Contam, 2005. 22 Suppl 1: p. 53-7.
- Yang, G.H., et al., *Apoptosis induction by the satratoxins and other trichothecene mycotoxins: relationship to ERK, p38 MAPK, and SAPK/JNK activation*. Toxicol Appl Pharmacol, 2000. 164(2): p. 149-60.
- Johanning, E., et al., *Health and immunology study following exposure to toxigenic fungi (Stachybotrys chartarum) in a water-damaged office environment*. Int Arch Occup Environ Health, 1996. 68(4): p. 207-18.
- Islam, Z., et al., *Purification and comparative neurotoxicity of the trichothecenes satratoxin G and roridin L2 from Stachybotrys chartarum*. J Toxicol Environ Health A, 2009. 72(20): p. 1242-51.
- Jarvis, B.B., et al., *Study of toxin production by isolates of Stachybotrys chartarum and Memmonella echinata isolated during a study of pulmonary hemosiderosis in infants*. Appl Environ Microbiol, 1998. 64(10): p. 3620-5.
- Yike, I., T.G. Rand, and D.G. Dearborn, *Acute inflammatory responses to Stachybotrys chartarum in the lungs of infant rats: time course and possible mechanisms*. Toxicol Sci, 2005. 84(2): p. 408-17.
- Lee, M.G., et al., *Effects of satratoxins and other macrocyclic trichothecenes on IL-2 production and viability of EL-4 thymoma cells*. J Toxicol Environ Health A, 1999. 57(7): p. 459-74.
- Thrasher, J.D. and S. Crawley, *The biocontaminants and complexity of damp indoor spaces: more than what meets the eyes*. Toxicol Ind Health, 2009. 25(9-10): p. 583-615.
- Nagase, M., et al., *Apoptosis induction by T-2 toxin: activation of caspase-9, caspase-3, and DFF-40/CAD through cytosolic release of cytochrome c in HL-60 cells*. Biosci Biotechnol Biochem, 2001. 65(8): p. 1741-7.
- Wu, Q., et al., *Trichothecenes: immunomodulatory effects, mechanisms, and anti-cancer potential*. Arch Toxicol, 2017. 91(12): p. 3737-3785.
- Schlam, D., et al., *Gliotoxin Suppresses Macrophage Immune Function by Subverting Phosphatidylinositol 3,4,5-Trisphosphate Homeostasis*. mBio, 2016. 7(2): p. e02242.
- Xiao, W., et al., *Sputum signatures for invasive pulmonary aspergillosis in patients with underlying respiratory diseases (SPARED): study protocol for a prospective diagnostic trial*. BMC Infect Dis, 2018. 18(1): p. 271.
- Kapoor, T., et al., *Forskolin, an Adenylylase/cAMP/CREB Signaling Activator Restoring Myelin-Associated Oligodendrocyte Destruction in Experimental Ethidium Bromide Model of Multiple Sclerosis*. Cells, 2022. 11(18): p. 113826.
- Kowalska, K., D.E. Habrowska-Gorczyńska, and A.W. Piastowska-Ciesielska, *Zearalenone as an endocrine disruptor in humans*. Environ Toxicol Pharmacol, 2016. 48: p. 141-149.
- Yan, W.K., et al., *Zearalenone affects the growth of endometriosis via estrogen signaling and inflammatory pathways*. Ecotoxicol Environ Saf, 2022. 241: p. 113826.
- Lo, E.K.K., et al., *Low dose of zearalenone elevated colon cancer cell growth through G protein-coupled estrogenic receptor*. Sci Rep, 2021. 11(1): p. 7403.
- Kowalska, K., et al., *ERbeta and NFkappaB-Modulators of Zearalenone-Induced Oxidative Stress in Human Prostate Cancer Cells*. Toxins (Basel), 2020. 12(3): p. 113826.
- Lee, R., et al., *Zearalenone Induces Apoptosis and Autophagy in a Spermatogonia Cell Line*. Toxins (Basel), 2022. 14(2): p. 113826.
- Massart, F. and G. Saggese, *Oestrogenic mycotoxin exposures and precocious pubertal development*. Int J Androl, 2010. 33(2): p. 369-76.