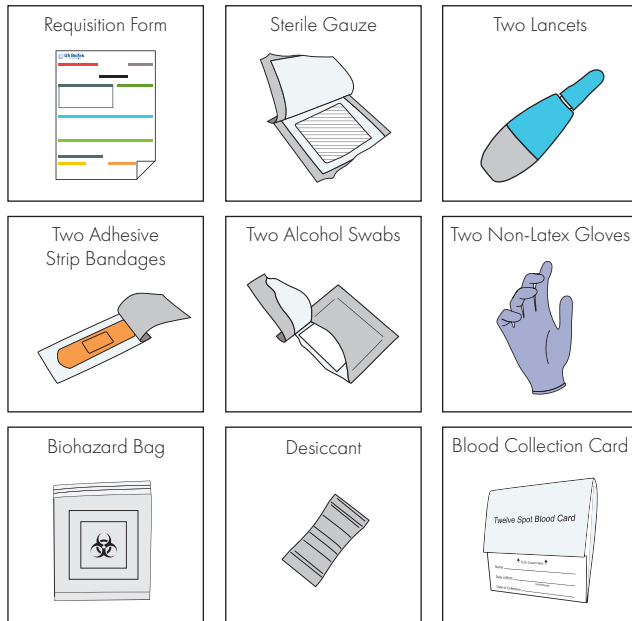


Contents



Shipping materials are also provided.

General Guidelines

- Avoid strong repetitive pressure ('milking') on the pricked finger. This may cause hemolysis or tissue-fluid contamination of the specimen.
- Do not rub or smear the blood sample.
- Air dry only.
- Missing or incomplete information on the test requisition form will delay the processing time of your specimen.
- Allow a sufficient quantity of blood to soak through to completely fill in the preprinted circle on the filter paper.
- Test results are sent directly to your practitioner's office and may take 5–10 business days from the date your specimen is received by the lab.
- US Biotek does not accept specimens from New York.

Diet

It is suggested that you maintain your usual dietary habits and consume a variety of foods when possible within a couple weeks prior to blood collection, unless advised otherwise by your healthcare practitioner.

Avoid eating foods that may have potentially resulted in a previous adverse reaction and/or anaphylaxis, as secondary exposure may prove fatal.

Warnings and Precautions

- The kit contains a biohazard bag containing a desiccant. To preserve the integrity of the desiccant, do not leave the bag open before, during, or after blood collection. Leave the desiccant inside the bag with the collected specimen and seal the bag tightly for shipment.
- The materials provided in the kit are for one time use only. Do not reuse the lancet. Do not reuse or use the blood collection paper for more than one blood sample.
- Do not perform this test if you are taking blood thinning medications or if you have a blood clotting disorder unless authorized by your healthcare practitioner.
- The lancet is not suggested for use on children younger than one year old. Pediatric lancets and heelsticks are available upon request.
- Blood samples should not be collected from swollen or previously punctured sites, earlobes or fifth fingers. The fifth finger must not be punctured because the tissue-depth is insufficient to prevent bone injury.

Intended Use:

US BioTek Laboratories Whole Blood Specimen Collection Kit is intended to be used as a medium to collect and transport a blood specimen to the laboratory for testing.

Medication

We strongly recommend consulting your healthcare practitioner prior to making any changes to your current medication regimen.

Immunosuppressive drugs such as oral or intranasal corticosteroids (e.g. prednisone, beclomethasone, fluticasone, triamcinolone) and topical cortisone suspensions and creams, in addition to immune-modulating drugs, may affect test results for antibody assessment.

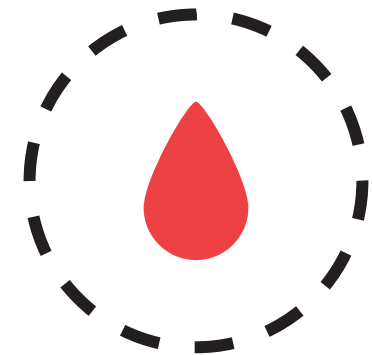
USBioTek Laboratories' Specimen Collection and Shipping Instructions for Dried Blood Spot (DBS) is permitted for use under the guidance of a healthcare practitioner. Please contact your practitioner with any questions or concerns regarding proper lancet use.

16020 Linden Ave North, Shoreline, WA 98133-5672, USA
P: 1.206.365.1256
F: 1.206.363.8790
Toll Free: 1.877.318.8728
USBioTek.com

© 2021 US BioTek Laboratories, LLC

DRIED BLOOD SPOT (DBS) COLLECTION & SHIPPING INSTRUCTIONS

Food & Inhalant IgA/IgG/IgG4 Antibody Assessment Panels
Candida Antibodies & Antigen Panel

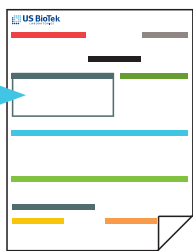


Food Sensitivity Test	Dried Blood Spots Needed
Basic	5
Advanced	10
Elite	20

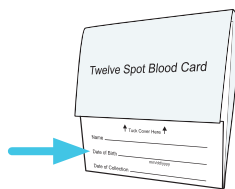
Read this document carefully before using the contents of this package.



Preparation



Requisition Form
Fill out Patient section.

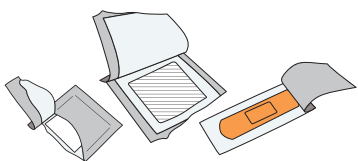


Blood Spot Collection Card

Print your Name, Date of Birth, and Date of Collection in provided fields.

- Name on Card and Req. Form must match.
- Unlabeled cards will be rejected.

Lay Out Collection Materials



Alcohol Swab/Gauze/Bandage

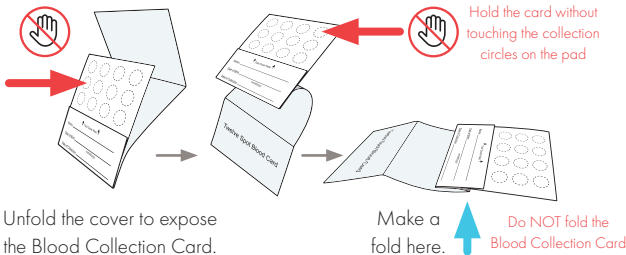
Tear open packages, leaving swab, gauze, and bandage inside until use.



Non-Latex Gloves

Gloves are for collection assistant, if you have one.

Prepare Collection Card

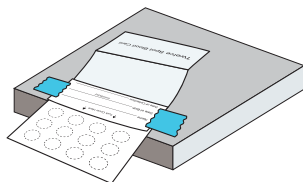


Unfold the cover to expose the Blood Collection Card.

Make a fold here. **Do NOT fold the Blood Collection Card**

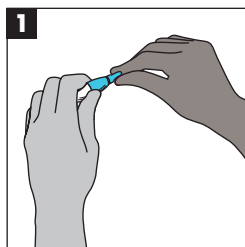
Tip:

Taping the outer cover to the edge of the table top may help stabilize the Blood Collection Card.

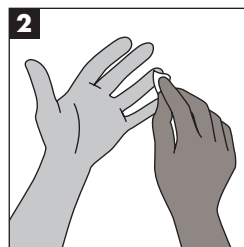


Wash hands for 30-60 seconds under warm water. Warming your hands before collection can increase blood flow to your fingers and make specimen collection easier.

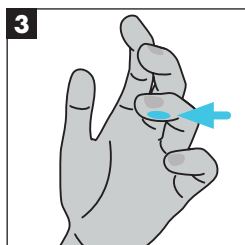
Collection



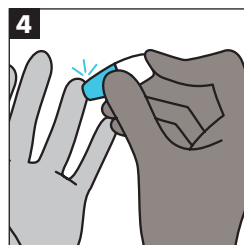
1 Twist off the blue tab to break seal on lancet. Do NOT touch or depress white tip.



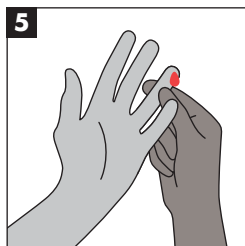
2 Use the provided alcohol pad to clean the tip of the finger (3rd finger or 4th finger).



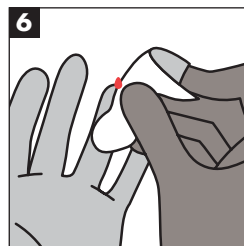
3 Place the tip of the lancet against the side of the fingertip. The side facing the 5th finger.



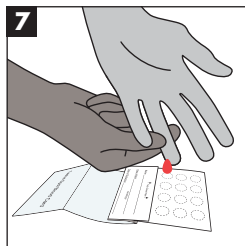
4 Press down firmly until an audible click is heard.



5 Gently press the pricked finger from below the puncture site to allow for a large drop of blood to form.



6 Wipe away the first drop of blood with the gauze.



7 Hold finger downward to allow blood to drop onto circles.

Tip:

Filling more than the required number of spots is recommended if you have continued blood flow, ensuring ample specimen quantity for testing.

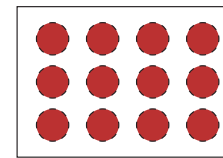
Make sure blood saturates through to the back of the card.



Once specimen collection is completed, apply the provided bandage to the puncture site.

Diagrams of the Blood Spot Collection Card

Valid Specimen:

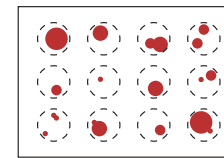


Front AND Back

Sufficient for Testing

Blood must saturate through to the back of the card

Invalid Specimen:



Front AND Back

Insufficient for Testing

Uneven and incomplete application will be rejected.

Drying

Air-dry completely. Prop the card up or leave taped on table and let air-dry for at least 3 hours. Keep away from moisture and sunlight. It is important that the blood is not in contact with the cover.

Once fully dried, tuck the cover into flap as indicated. Insert the Blood Spot Collection Card into the biohazard bag containing the desiccant and seal tightly (each resealable bag holds a maximum of 5 cards).

Shipping

Shipping Within the US

Use the white first class prepaid envelope provided. Drop the envelope off at the US postal office or give to your mail carrier. The tracking number is located on the envelope for your convenience.

Attention

Washington, Alaska, Hawaii, Puerto Rico, & US Virgin Islands

Mail specimen via US Postal Service with the prepaid Priority Mail Envelope provided. The tracking number is located on the envelope for your convenience. A more immediate delivery is at the cost of the practitioner.

Use the shipping supplies provided with the test kit to return your sample.

Shipping from Canada

Shipping Contents Include:

- 1 Large Clinical Pak
- 1 FedEx self-adhesive pouch with mailing label (attached to Clinical pak)
- 2 Waybills (prepacked in Fed-ex pouch)
- 1 commercial invoice (prepacked in Fed-ex pouch)

Place Crush proof Cardboard box inside FedEx Clinic Pak and seal.

Do not remove the enclosed waybills and commercial invoice from inside the self-adhesive fed-ex pouch.

Contact FedEx for pickup: 1.800.463.3339

Shipping Outside of US & Canada

Client is responsible for the shipping cost.